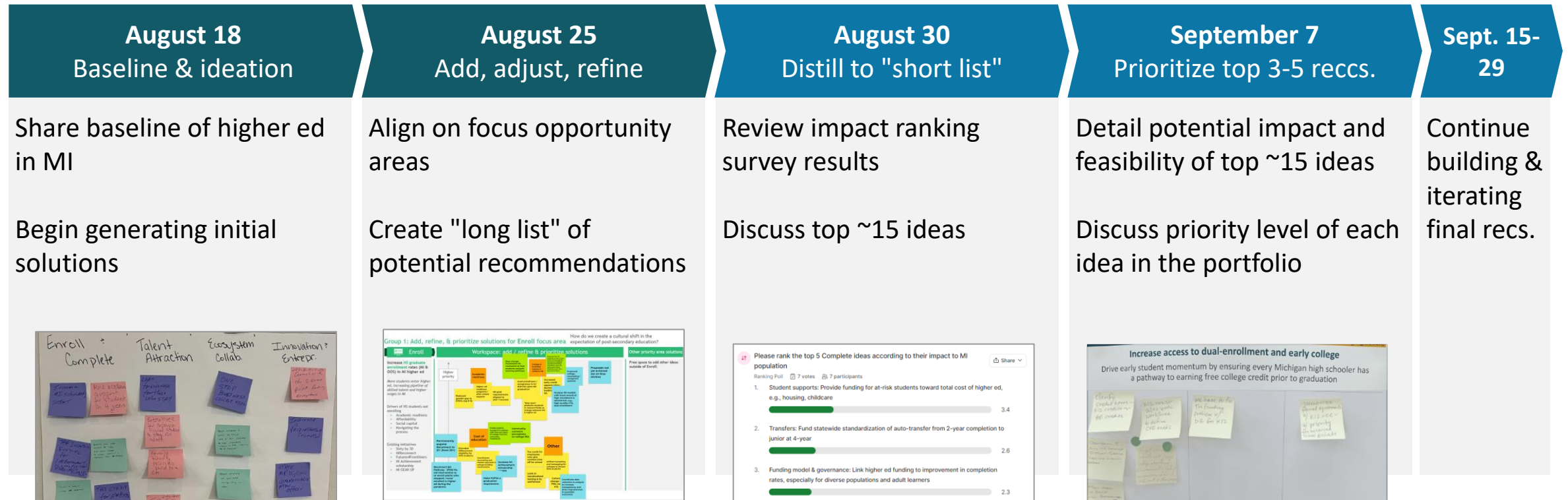


Higher ed workgroup process | Began with baselining and "divergent thinking" to create list of potential solutions, now "converging" on prioritized recommendations

Note: process will still be iterative

Divergent thinking

Convergent thinking



Higher ed baseline findings | MI is net talent exporter; not enough in-migration of college-educated talent to offset graduates lost

MI appealing undergraduate destination with net import of ~1,700 students...

10,160	Students inbound to MI
-8,500	Students outbound from MI
<hr/>	
1,660	Net inflow of students



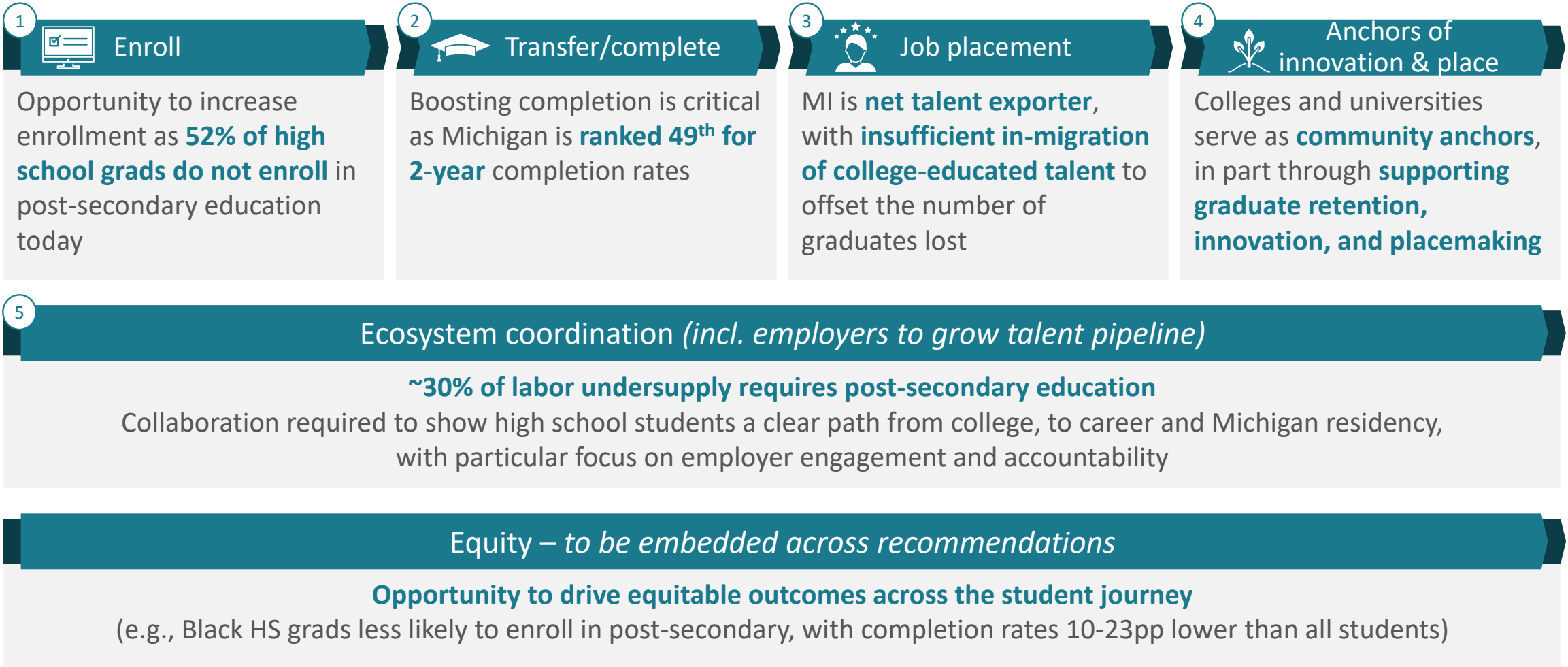
... Though post-graduation, this gain is offset by ~5,600 student net "brain-drain"

1,970	Grads inbound to MI
-7,520	Grads outbound from MI
<hr/>	
-5,550	Net outflow of grads

Note: Does not consider movement of students who fail to complete

Note: Total values rounded to the nearest hundred; Enrollment based on 2020 values due to data availability; neighboring states include OH, IL, IN, WI; absolute transition snapshot derived from "Grads on the go" state migration % x cohort degree completion
Source: IPEDS; "Grads on the go", Inter-university Consortium for Political and Social Research

Higher ed baseline findings | Opportunities to improve outcomes and drive population growth exist across the student journey



Higher ed priorities | 5 core priorities emerged from baselining and workgroup discussion



Portfolio across steps of student journey provides integrated, long-term, sustainable impacts on population growth

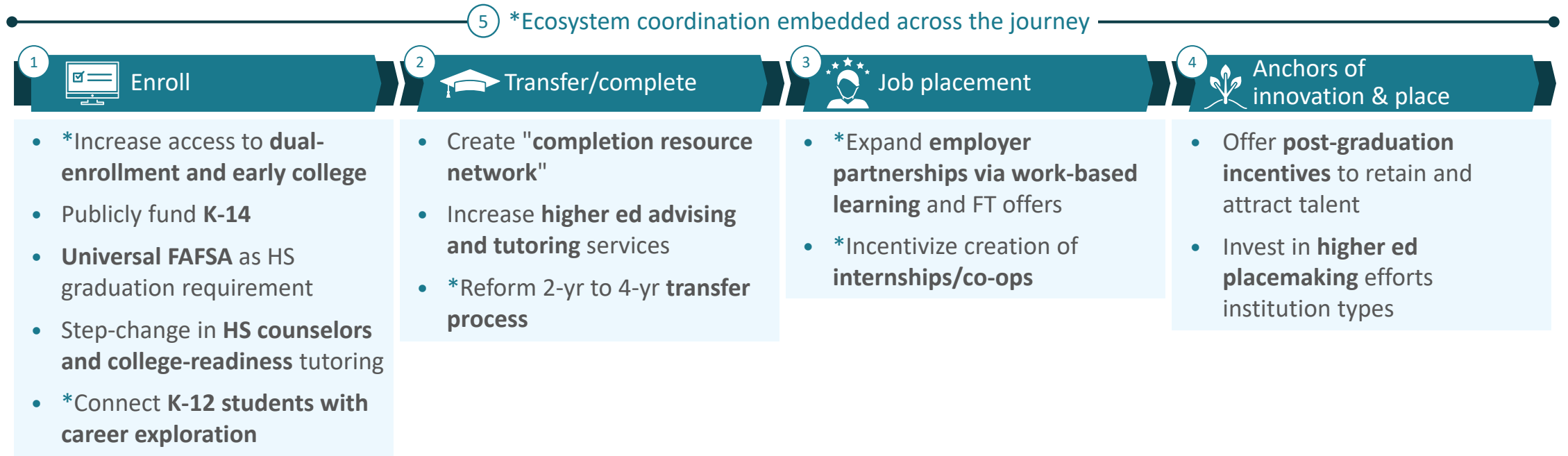
Vision statement

Increase **enrollment** through **system of support** including **affordable college access**...

... With **wrap arounds** that enable students to persist, **complete** ...

... And find meaningful **in-demand work in the MI** labor market...

... While also making **MI a more attractive place** to live post-graduation



Enablers

- *Strengthen **labor and education analytics**
- Raise portion of **performance-based CC funding**