



Growing MI Together: Higher education workgroup

Workgroup Meeting #5

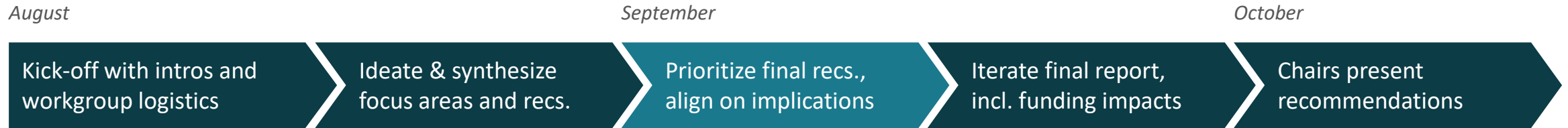
September 7, 2023

GROWING
MICHIGAN
TOGETHER



Process overview | This is our fifth higher education workgroup meeting

Growing Michigan Together Council will provide recommendations to **increase state population** across four topic areas, one of which is **higher education**



Today we will...

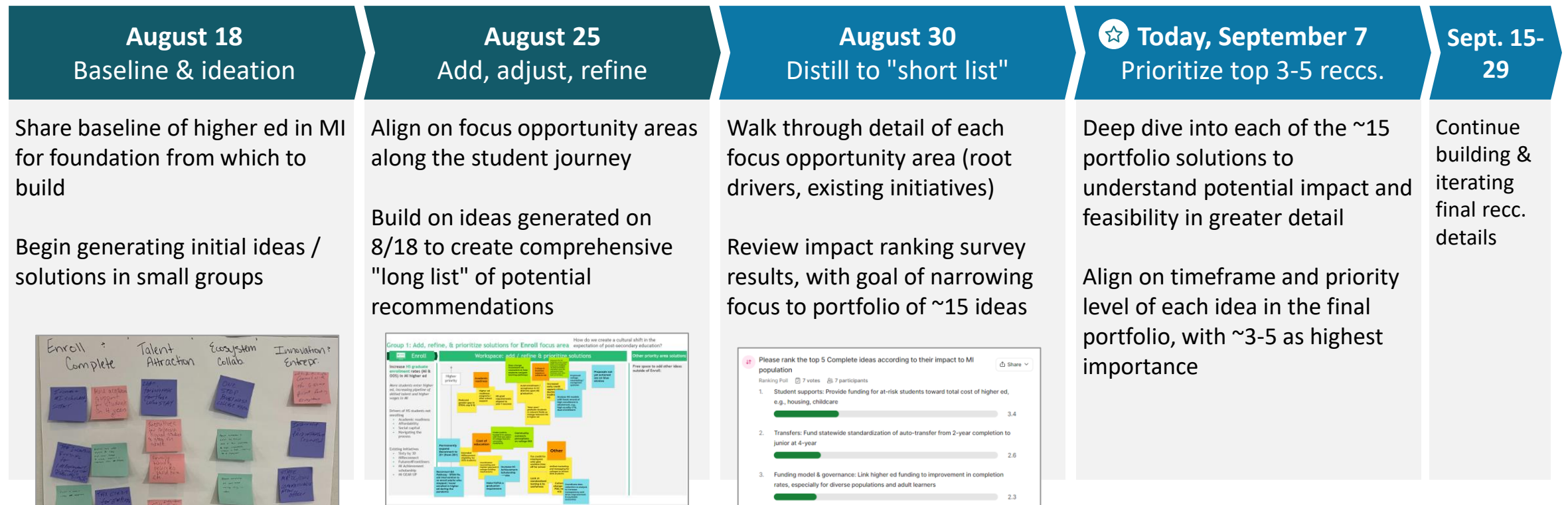
1. Recap our process and the short list of potential recommendations
2. Gather your input to detail recommendations further
3. Wrap-up and next steps

How we'll refine our list of potential solutions | Today we will define short list of recommendations in greater detail and gather input on prioritization of top 3-5 recs.

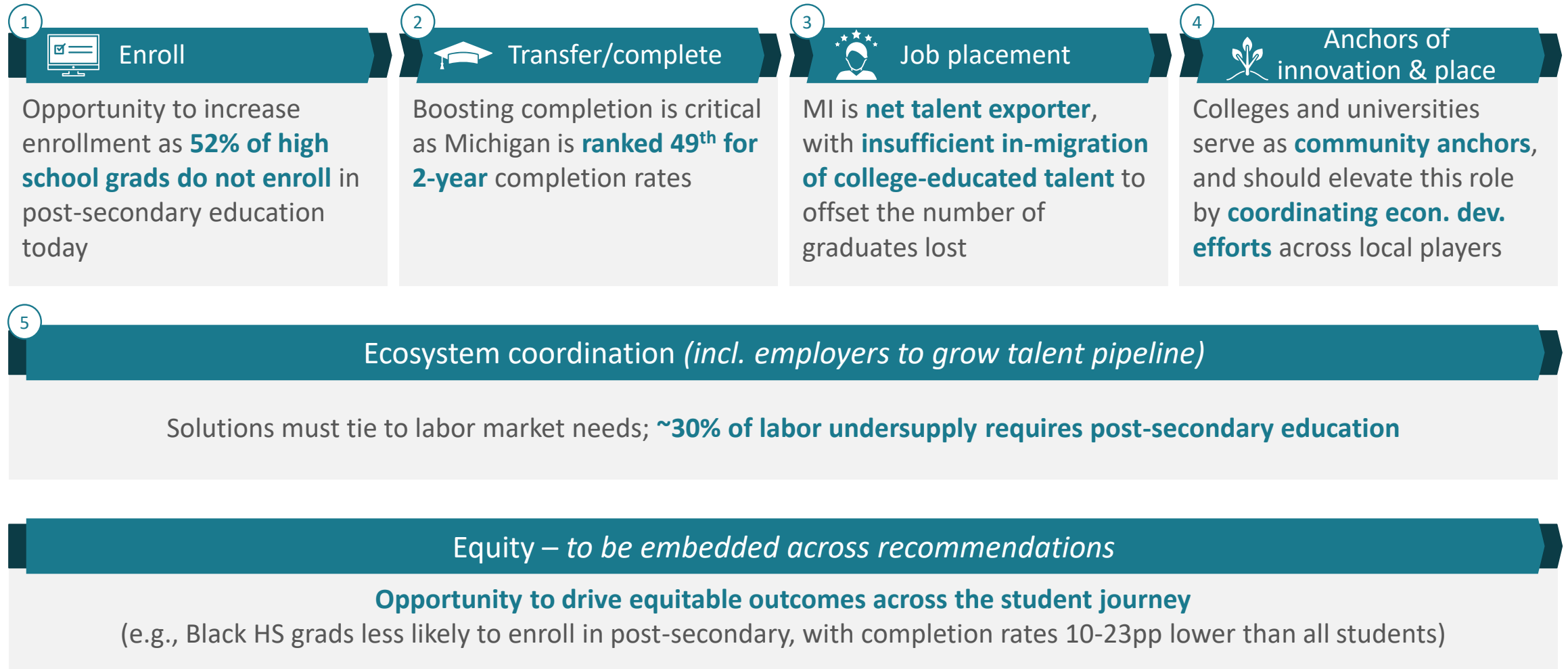
Note: process will still be iterative

Divergent thinking

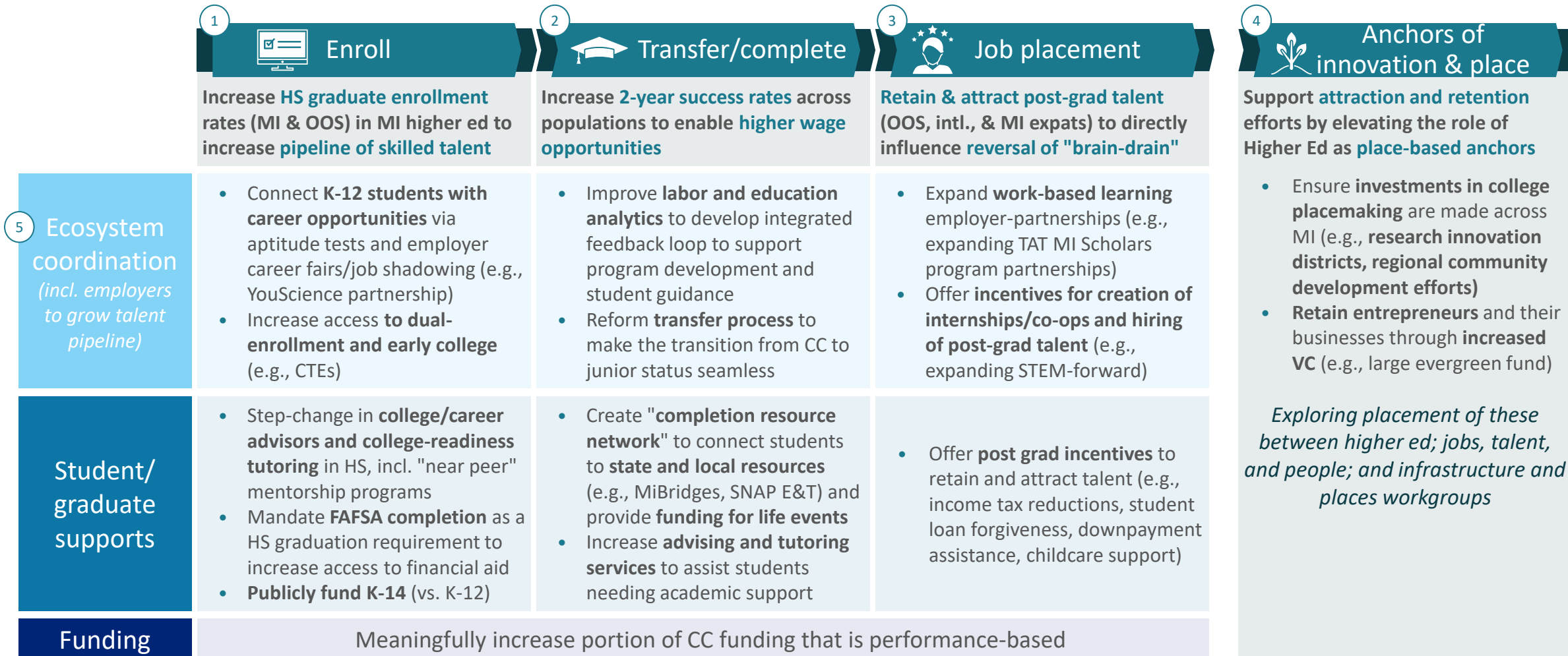
Convergent thinking



Recall | Baselineing informed development of priority areas across the student journey



Portfolio across steps of student journey provides integrated, long-term, sustainable impacts on population growth



Impacts compound when solutions are executed across entire student journey

Instructions for providing input to build-out recommendations

Recommendation details – 25 min

- Using the posters around the room, provide input (via stickies) that will allow us to detail each recommendation e.g.,
 - How would you adjust / refine the recommendation to maximize the impact and effectiveness?
 - What will be required to make this happen? What key challenges do you foresee?
 - How can we drive equitable outcomes through this recommendation?
- Please include your name on the stickies you add, so we can follow-up with questions/clarification as-needed

"Pitch" time – 25 min

- Workgroup members who are passionate about particular ideas will be given 2-3 minutes to share their "pitch"
- If interested in advocating / sharing, please let Bekki know during the first 30 minutes of the activity

Voting – 5 min

- Using provided stickers, vote on the initiatives you believe should be top priority, considering expected impacts and feasibility
- You can spend your 5 votes however you see fit; all 5 votes on a single recommendation or 1 vote across 5 recommendations
- These votes will help inform the final set of recommendations, along with consideration of building a cohesive portfolio

Debrief as full group – 10 min

The handout poster is titled "Increase access to dual-enrollment and early college" and is categorized as an "Administrative action (builds on existing legislation)". It includes a description of the recommendation, draft details, population impact assessment, key questions for group input, and a voting space. Callouts on the right side of the poster identify these sections: "Description of the recommendation", "Strawman recommendation for Michigan", "Space to add thoughts that detail the initiatives further", and "Space to 'spend' your 5 votes on which initiatives should be top priority".

Description of the recommendation: Drive early student momentum by ensuring every Michigan high schooler has a pathway to earning free college credit prior to graduation.

DRAFT recommendation details: Allocate state incentives to K-12 districts and higher ed institutions that agree to meet the below criteria, generating seamless pathways from HS to College.

- High schools require at least 3 credits of college readiness course work (dual enrollment, early college, CTE, AP)
- High schools broaden dual enrollment access to students beyond their fourth year, provided they have not yet met the maximum of 10 courses overall
- Community colleges agree to provide courses on HS campuses
- Community colleges consult local workforce development boards to align CTE pathways and labor markets
- Colleges and universities require a single application (vs. one per semester) for dual enrollment

Population impact assessment (reach ~450K MI HS students each year)¹

Direct migration Neutral Focus on MI HS students limits direct migration impact	MI stickiness Decrease Increased education associated with greater OOS opportunity	Birthrate Increase Access to higher wages inc. future comfort starting a family
--	---	--

Key questions for group input

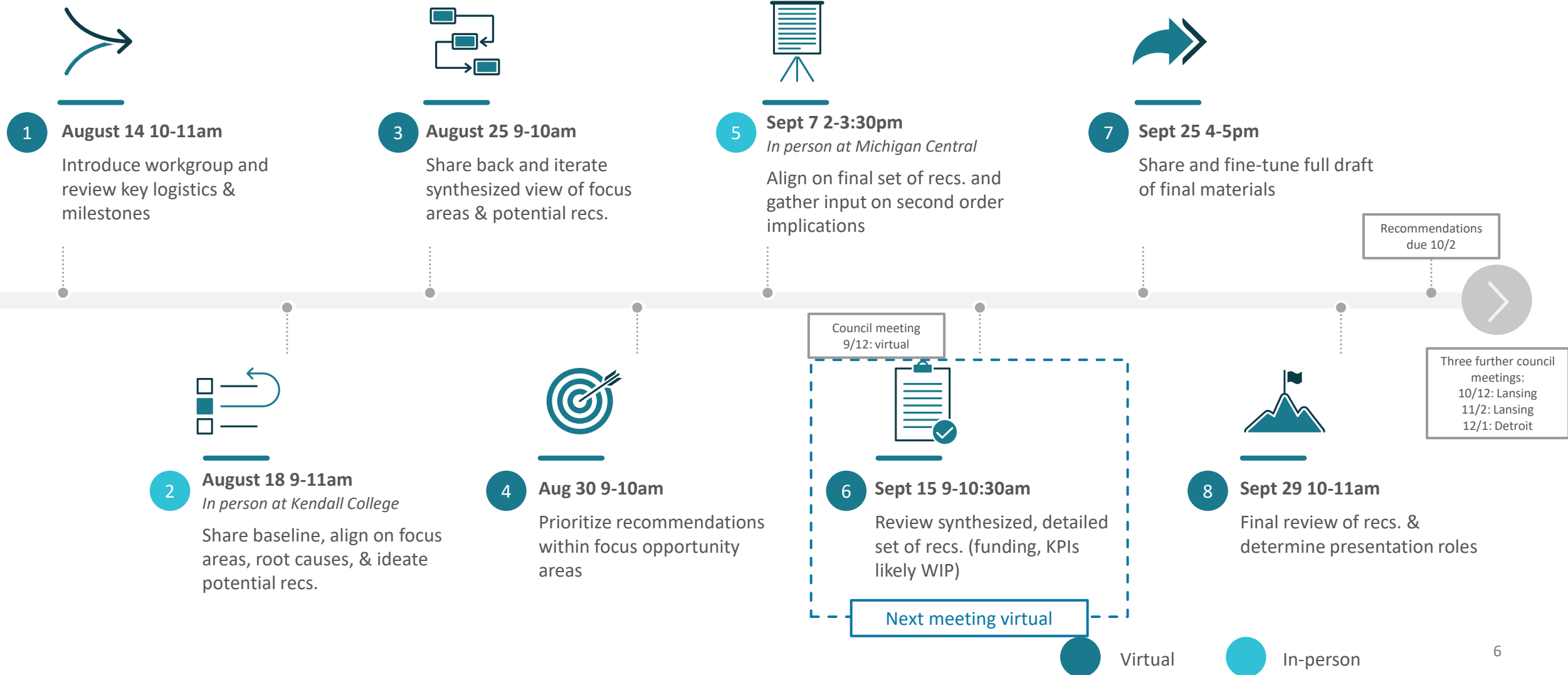
How would you adjust/refine the recommendation to maximize impact and effectiveness?	What will be required to make this happen? What key challenges do you foresee?	How can we drive equitable outcomes through this recommendation?

Use this space to vote

1. Grades 9-12 2022-2023 enrollment from MISchoolData

Handouts include supplemental info, including existing MI initiatives and examples from other states

Our sixth workgroup meeting will be virtual, where we will begin to iterate on the final recommendations



Next steps

BCG and workgroup chairs to generate view of final recommendations based on today's inputs and analysis of portfolio cohesiveness/impact

- Workgroup members are also welcome to send offline input/comments

We will reconvene virtually on September 15 to review the prioritization and begin iterating the draft of final recommendations

Thank you!

